

---

**Braun LS5100 fully assembled**



## Correct removal of foil head

When removing the foil head for cleaning or other maintenance, use the thumb and forefinger and grip either side, applying an inward gripping pressure to release the clips and lift upwards in line with the shaver body.



## Incorrect removal of foil head

If you remove the foil head at an angle it may catch the foil and knock it from its support. Although not the preferred outcome, the cutter becoming detached is nothing to worry about as it is designed to be removed for replacement or cleaning.



## Cutter knocked from support

If the cutter becomes detached as shown below, please proceed with the following steps.



**Before re-attaching the cutter, first remove the cutter support - Step 1**



Rotate the white cutter support a quarter turn clockwise

## Before re-attaching the cutter, first remove the cutter support - Step 2

You should now be able to lift the cutter support directly up and remove it from the shaver body.



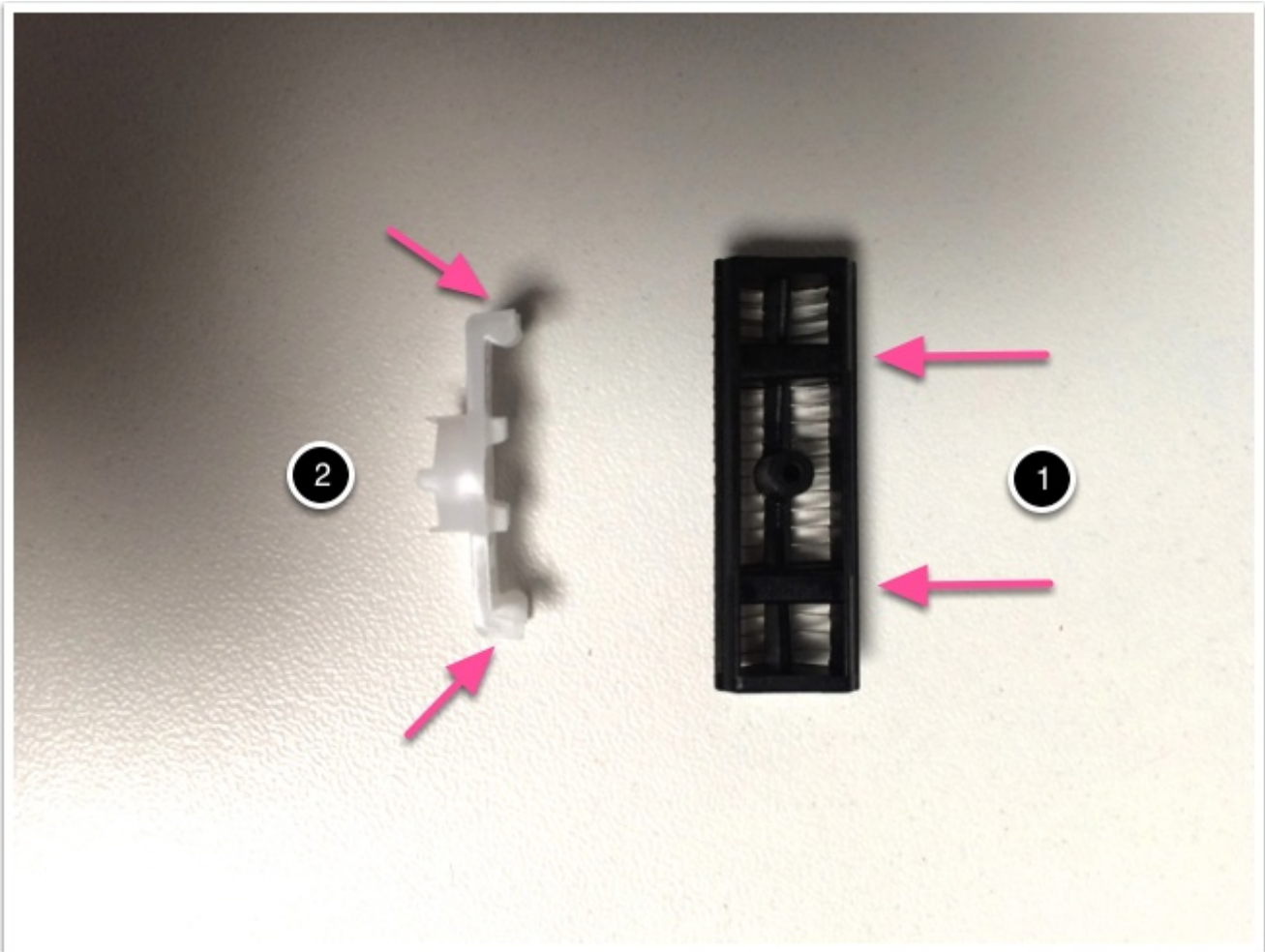
## Cutter and support are now detached from shaver body

You should now have the cutter support removed as shown in the image below.



## Line up support with the underside of the cutter

Identify the two support bars on the underside of the cutter (1). Bring the cutter support into a position where the support clips at either end (2) will clamp over the support bars on the cutter. You will need to apply equal pressure to each clip simultaneously as you push down. See the image on the next page for the assembled items for further help in lining them up if needed.





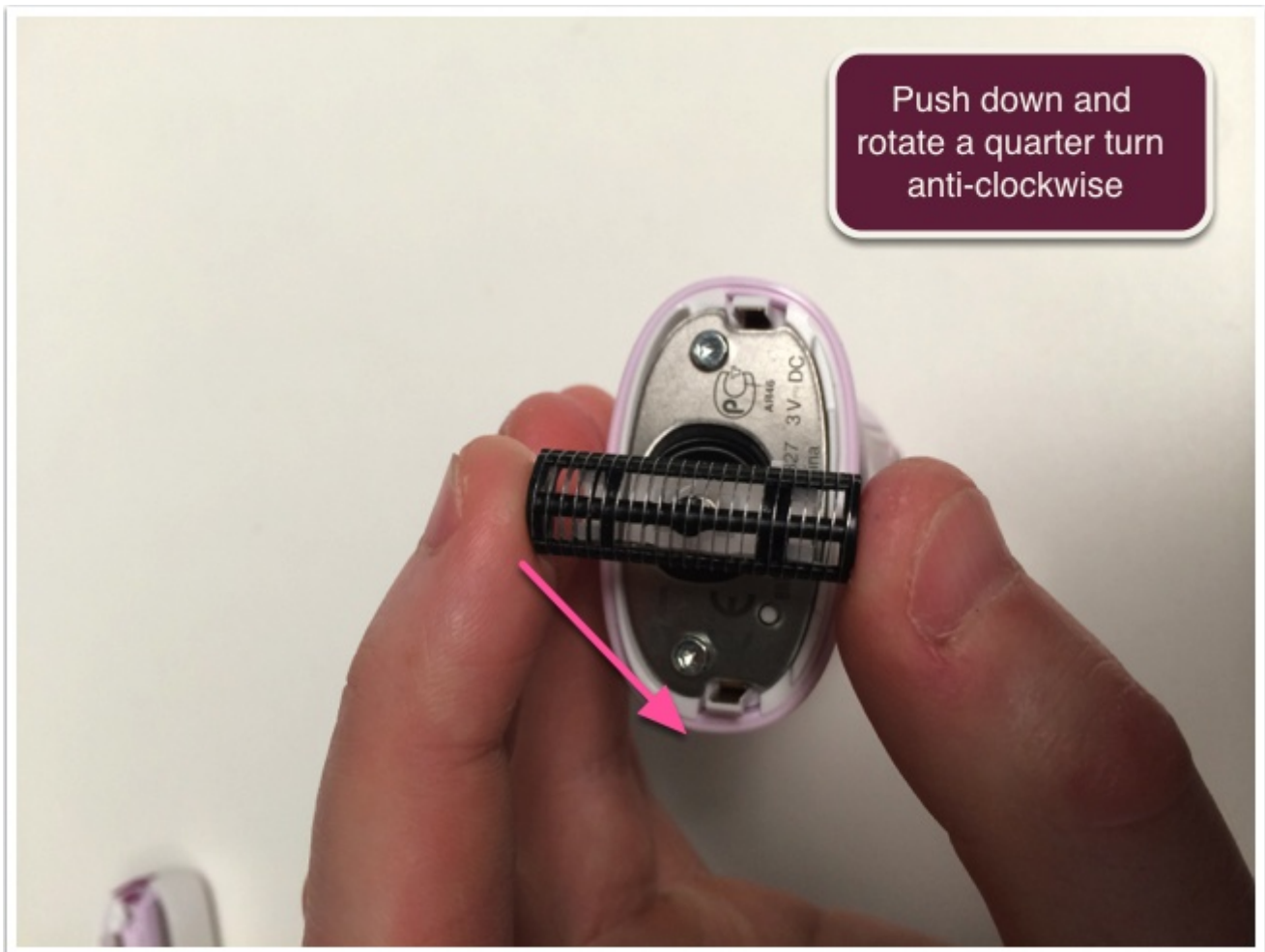
## Clip support to base of cutter

Having attached the cutter support to the cutter. You should see the following.



## Re-attach cutter to shave body

Position the prepared cutter assembly centrally over the pin and spring. While gently pushing down to resist the spring, rotate the cutter a quarter turn anti-clockwise to lock into place.



## Shaver with re-attached cutter

Having rotated the cutter back into place it should appear as the image below. The cutter should be fixed into place and should not fall off it correctly attached.



## Re-attach foil head

Re-attach the foil as the reversal of the original, correct removal. Directly down, in-line with the shaver and with even pressure.



**Braun LS5100 fully assembled**

