

**Philips Domestic Appliances and Personal Care**

Service Manual

PRODUCT INFORMATION**General:**

- Mains/Rechargeable operation
- World-wide automatic voltage selection
- Electronic on/off switch
- Washable

Safety information

- This product meets the requirements regarding interference suppression on radio and TV.
- After the product has been repaired, it should function properly and has to meet the safety requirements as officially laid down at this moment.

TECHNICAL INFORMATION

- Voltage : 100 - 240 Volt / 50 - 60 Hz
- Motor voltage : 1,2 Volt
- Shaving heads : HQ8 - 4222 036 05820
- SAP coding : HQ7290

DISASSEMBLY- AND RE-ASSEMBLY ADVICE**Disassembly:**

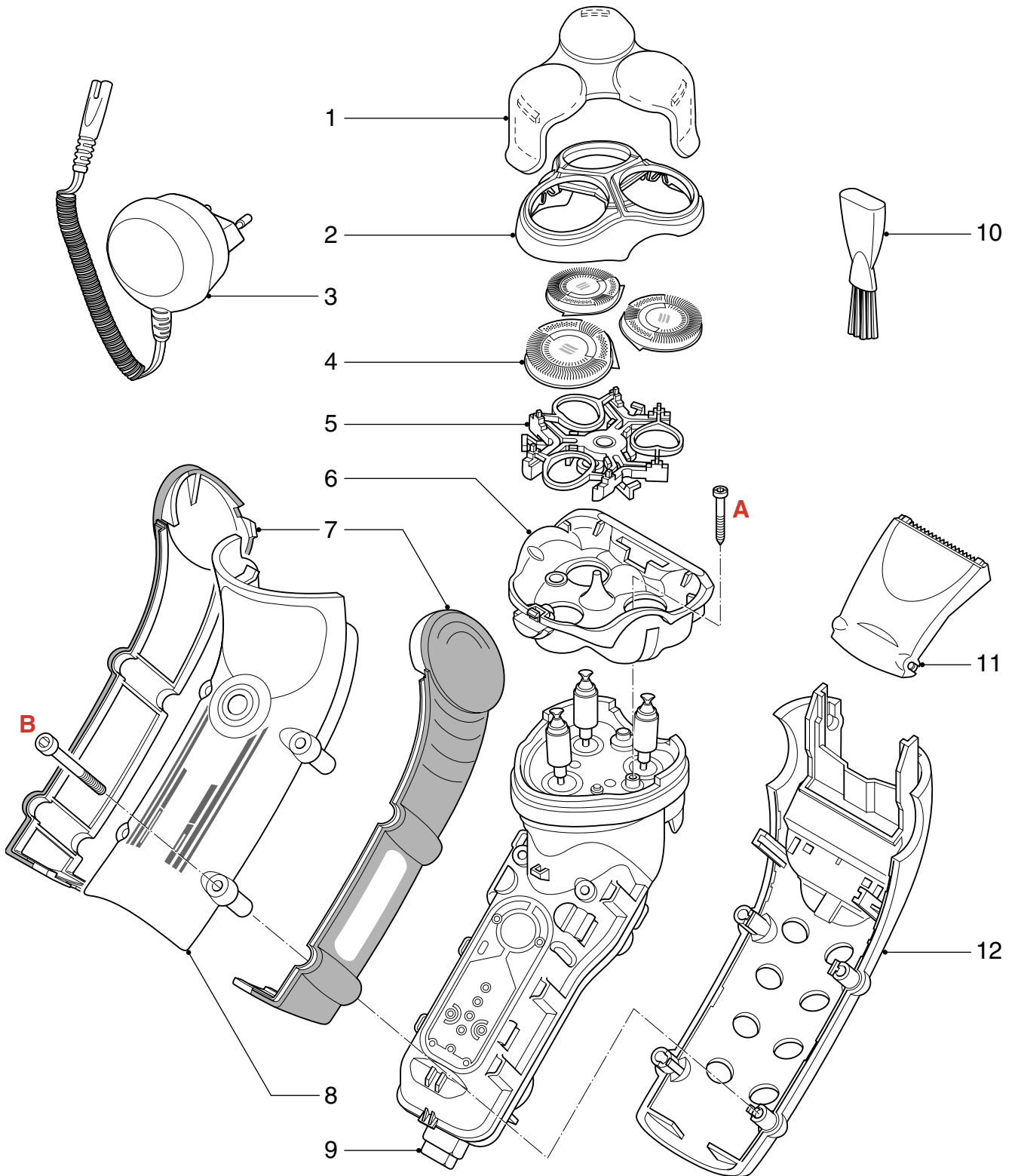
- Remove shaving unit, to prevent damaging during repairing.
- Remove the 2 screws (A) out of the hairchamber.
- Remove the hairchamber from the body.
- Remove the 4 screws (B) on the fronside of the shaver.
- Remove the cover.
- Remove the side grips.
- Remove the housing.
- Take out the basic body.

REPAIR INSTRUCTION

- No specific issues

OPTIONAL (accessories)

Car cord : 4222 036 08920



Pos	Service code	Description
1	4222 036 12950	Protection cap Cheetah
2	4222 036 12980	Bracket-assy
3	4222 036 06790	Power plug EUR
	4222 036 03970	Power plug GBR
	4222 036 06800	Power plug Can/Tw/Ven
	4222 036 04000	Power plug KOR
	4222 036 04040	Power plug PRC
	4222 036 04020	Power plug AUS/NZ
4	4222 036 08930	Power plug JAP
	4222 036 05820	Shaving heads

Pos	Service code	Description
5	4222 036 12990	Holder-assy
6	4222 036 13000	Hairchamber
7	4222 036 12920	Grip left & right
8	4222 036 12900	Housing-assy
9	4222 036 13080	Basic body
10	4222 036 02770	Brush
11	4222 036 13010	Trimmer-assy
12	4222 036 13050	Back shell assy
A	4222 036 11480	Screw
B	4222 036 13090	Design screw