



Philips Consumer Lifestyle

# Service Manual

## PRODUCT INFORMATION

### General:

- Rechargeable
- World-wide automatic voltage selection
- Electronic on/off switch
- Washable

### Safety information

- This product meets the requirements regarding interference suppression on radio and TV.
- After the product has been repaired, it should function properly and has to meet the safety requirements as officially laid down at this moment.

## TECHNICAL INFORMATION

- Voltage : 100 - 240 Volt / 50 - 60 Hz
- Motor voltage : 1,2 Volt
- Shaving heads : HQ9/3 - 4222 036 15880
- SAP coding : HQ8253

## DISASSEMBLY- AND RE-ASSEMBLY ADVICE

### Disassembly:

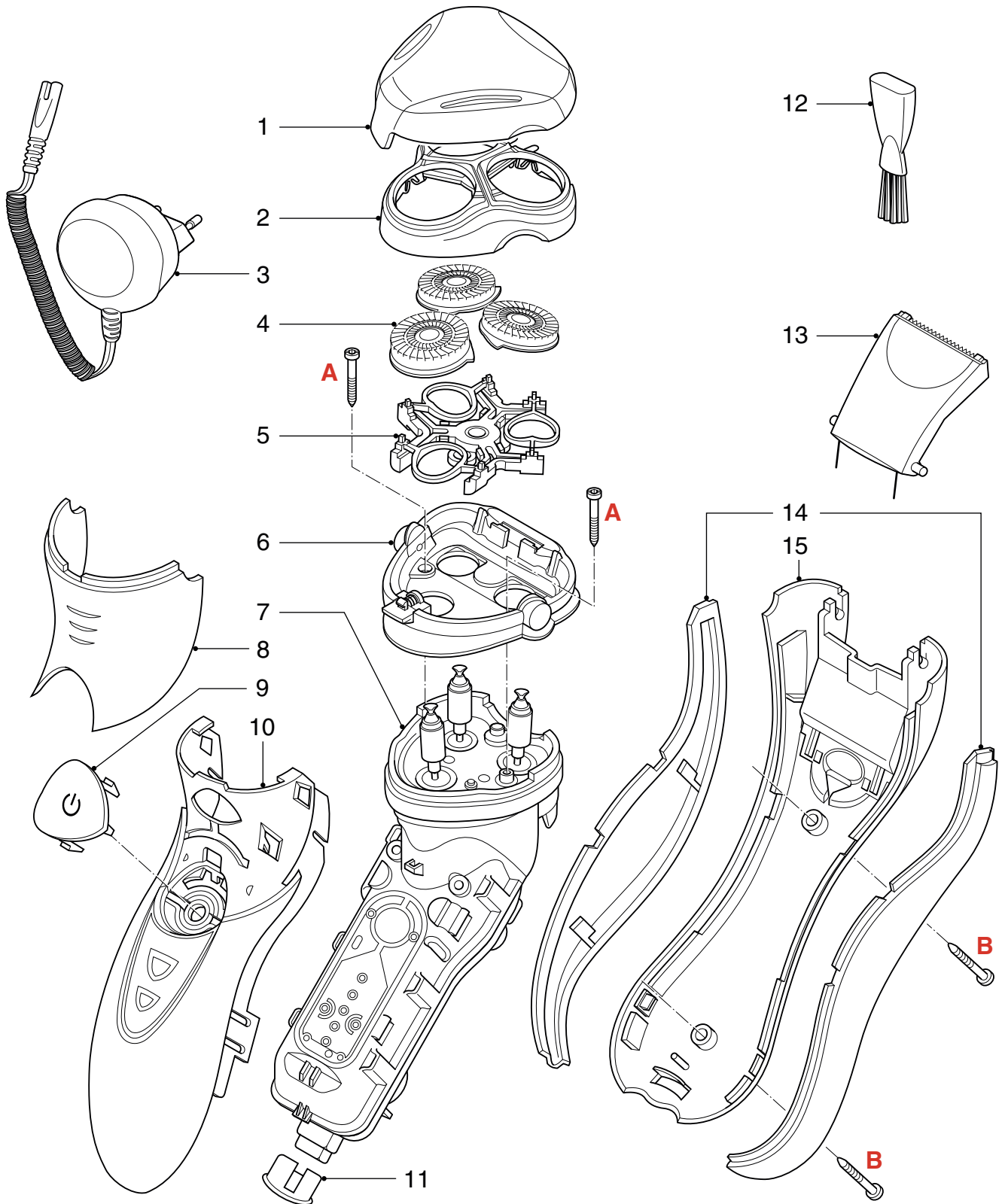
- Remove shaving unit, to prevent damaging during repairing
- Remove the 2 screws **A** out of the hairchamber
- Remove the hairchamber from the body
- Remove the 2 screws **B** on the backside of the shaver
- Remove the cover
- Remove the side grips
- Remove the housing by bending the hooks with a screwdriver
- Take out the basic body

## REPAIR INSTRUCTION

- No specific issues

## OPTIONAL (accessories)

- Pouch soft 4222 036 16260
- Basic stand 4222 036 16270
- Charging stand 4222 036 16290
- Power plug curl.
  - Europa 4222 036 06790
  - Aus/Nz 4222 036 04020
  - GBR 4222 036 03970
  - Can/TW 4222 036 06800
  - MEX 4222 036 04030
  - KOR 4222 036 04000
  - JAP 4222 036 08930
  - PRC 4222 036 04040
  - ARG 4222 036 03980



| Pos | Service code   | Description        |
|-----|----------------|--------------------|
| 1   | 4222 036 15400 | Protecting cap     |
| 2   | 4222 036 15410 | Bracket assy       |
| 3   | see optional   | Power plug         |
| 4   | 4222 036 15880 | Shaving head HQ9/3 |
| 5   | 4222 036 15430 | Holder assy        |
| 6   | 4222 036 15450 | Hairchamber        |
| 7   | 4222 036 15650 | Basic body         |
| 8   | 4222 036 15570 | Front grip panel   |

| Pos | Service code   | Description     |
|-----|----------------|-----------------|
| 9   | 4222 036 15580 | On/off knob     |
| 10  | 4222 036 17370 | Housing assy    |
| 11  | 4222 036 15760 | Bottom ring     |
| 12  | 4222 036 02770 | Brush           |
| 13  | 4222 036 15710 | Trimmer assy    |
| 14  | 4222 036 15730 | Side grip L & R |
| 15  | 4222 036 17360 | Back shell assy |
|     | 4222 036 11480 | Screw           |