



Philips Consumer Lifestyle

# Service Manual

## PRODUCT INFORMATION

### General:

- Rechargeable
- World-wide automatic voltage selection
- Electronic on/off switch
- Washable

### Safety information

- This product meets the requirements regarding interference suppression on radio and TV.
- After the product has been repaired, it should function properly and has to meet the safety requirements as officially laid down at this moment.

## TECHNICAL INFORMATION

- Voltage : 100 - 240 Volt / 50 - 60 Hz
- Motor voltage : 3,6 Volt
- Shaving heads : HQ9/3 - 4222 036 15880
- SAP coding : HQ8290

= changed

## DISASSEMBLY- AND RE-ASSEMBLY ADVICE

### Disassembly:

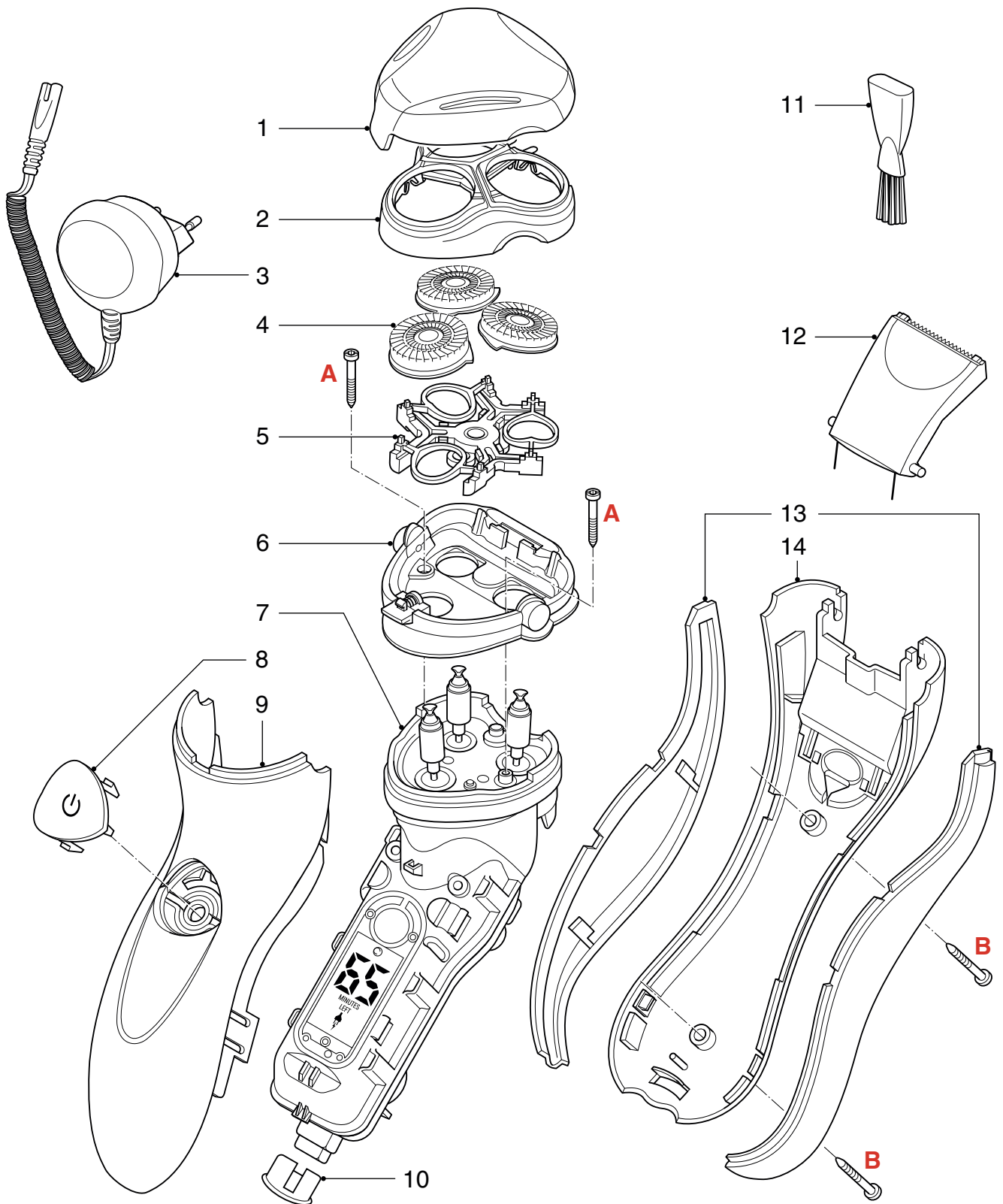
- Remove shaving unit, to prevent damaging during repairing
- Remove the 2 screws **A** out of the hairchamber
- Remove the hairchamber from the body
- Remove the 2 screws **B** on the backside of the shaver
- Remove the cover
- Remove the side grips
- Remove the housing by bending the hooks with a screwdriver
- Take out the basic body

## REPAIR INSTRUCTION

- No specific issues

## OPTIONAL (accessories)

- Pouch soft 4222 036 16260
- Jet clean 2.1 4222 036 16280
- Charging stand 4222 036 16290
- Power plug straight
  - Europa 4222 036 04080
  - Aus/Nz 4222 036 05120
  - GBR 4222 036 04090
  - Can/TW 4222 036 05110
  - MEX 4222 036 03810
  - KOR 4222 036 04850
  - JAP 4222 036 03870
  - PRC 4222 036 10320
  - ARG 4222 036 03760



Pos	Service code	Description
1	4222 036 15400	Protecting cap
2	4222 036 15410	Bracket assy
3	see optional	Power plug
4	4222 036 15880	Shaving head HQ9/3
5	4222 036 15430	Holder assy
6	4222 036 15440	Hairchamber
7	4222 036 15690	Basic body
8	4222 036 15410	On/off knob

Pos	Service code	Description
9	4222 036 15560	Housing assy
10	4222 036 15760	Bottom ring
11	4222 036 02770	Brush
12	4222 036 15710	Trimmer assy
13	4222 036 15750	Side grip L & R
14	4222 036 15640	Back shell assy
	4222 036 11480	Screw