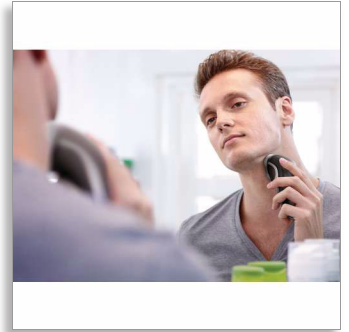




Philips SHAVER Series
3000
dry electric shaver

CloseCut heads Flex & Float
35-min cordless use/8-hr charge



HQ6927

Close even on the neck

CloseCut blades

A close and comfortable shave for an affordable price. The Flex & Float system is combined with CloseCut blades, guaranteeing a close and comfortable shave.

Comfortably close

- Replacement heads
- CloseCut blades, durable and self-sharpening for a close shave

Adjusts to every curve of your face and neck

- Flex & Float adjusts to face and neck curves

Easy to use

- 35+ shaving minutes, 8-hour charge
- 2-year guarantee, worldwide voltage and replaceable blades
- Can be used corded and cordless

Easy grip

- Ergonomically designed grip for easy handling



Dry electric shaver
CloseCut heads Flex & Float 35-min cordless use/8-hr charge

HQ6927/16

Specifications

Accessories

- Maintenance: Cleaning brush, Protection cap

Ease of use

- Charging: 8 hours
- Charging: Corded/cordless, Charging indicator

Power

- Automatic voltage: 100–240 V
- Run time: 30 min

Service

- Replacement head: Replace every 2 yrs with HQ56

Shaving Performance

- Shaving System: CloseCut
- Contour-following: Reflex Action system, Individual floating heads

Highlights

Easy grip for optimal handling



This ergonomically designed grip enables easy handling for a comfortable shave.

Replacement heads

For maximum performance replace your shaving heads every two years with HQ56



Issue date 2013-12-02

Version: 4.0.1

EAN: 08 71010 36157 43

© 2013 Koninklijke Philips N.V.
All Rights reserved.

Specifications are subject to change without notice.
Trademarks are the property of Koninklijke Philips N.V.
or their respective owners.

www.philips.com