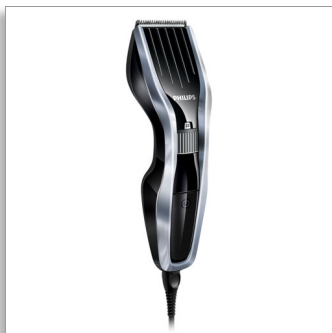




Philips HAIRCLIPPER  
Series 5000  
hair clipper with DualCut  
Technology

**Stainless steel blades**

24 length settings  
Corded use  
2 beard combs and case



HC5410/83

## HAIRCLIPPER Series 5000 - Cuts twice as fast

with DualCut technology for a faster, sharper cut

The HAIRCLIPPER Series 5000 is built to last and engineered to perform. The innovative cutting element, stainless steel blades and adjustable beard and hair combs are designed to give you a fast, sharp cut, time after time.

**Performance**

- Double-sharpened cutting element with reduced friction
- Self-sharpening steel blades for long-lasting sharpness

**Precise length control**

- Easy to select and lock in 24 length settings: 0.5 to 23mm
- Includes 1.5- and 3-mm combs for the perfect beard

**Easy to use**

- Efficient power system for corded use
- 'Quick release' blades for easy cleaning

**Built to last**

- 2-year guarantee plus 3 years when you register the product online
- Hard case for reliable storage
- The blades never need oiling

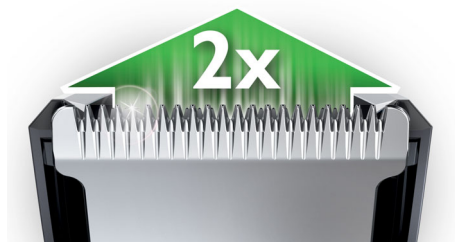
# PHILIPS

Hair clipper with DualCut Technology  
Stainless steel blades 24 length settings, Corded use, 2 beard combs and case

HC5410/83

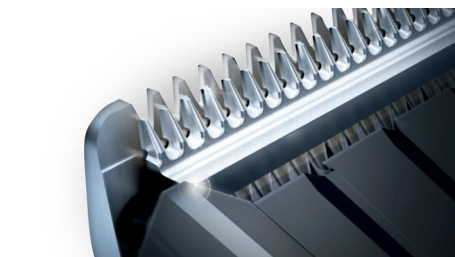
# Highlights

## DualCut Technology



Power through any hair type with our advanced DualCut Technology, which combines a double-sharpened cutting element with low-friction engineering. The innovative cutting element is designed to cut hair twice as fast as regular Philips clippers, with the added confidence of a robust steel guard for ultimate durability.

## Stainless steel blades



Self-sharpening stainless steel blades for long-lasting sharpness.

## 24 lock-in length settings



Turn the zoom wheel to simply select and lock in the length you want, with 23 length settings from 1 to 23 mm, and precisely 1 mm between

each length. Or you can use it without the comb for a close 0.5-mm trim.

## Efficient corded use



Power cord provides constant power.

## Easy to clean



Simply click open the detachable head to quickly release and wash the blades.

## 5-year worldwide warranty



All of our grooming products are built to last. They come with a worldwide guarantee and worldwide voltage compatibility. Simply register your clipper at [www.philips.com/5years](http://www.philips.com/5years) to receive an additional 3 years on top of your standard 2-year Philips guarantee,

giving you a 5-year worldwide warranty in total.

## Bonus 1.5- and 3-mm beard combs



Use your Philips hair clipper to style your beard. It comes with 2 dedicated beard comb attachments to give you the complete style you want.

## Hard storage case



Your clipper comes with a reliable hard case for complete durability, to ensure it is kept in optimum condition for ultimate power and precision, time after time.

## No oil needed



No oil needed, for easy maintenance and to save you time.

# Specifications

## Cutting system

- Cutter width: 41 mm
- Cutting element: Stainless steel blades
- Number of length settings: 24
- Range of length settings: From 0.5 to 23 mm
- Precision (size of steps): By 1 mm
- Precision beard comb: 1.5 mm beard comb, 3 mm beard comb

## Power system

- Operation: Corded only

## Ease of use

- Cleaning: Washable blades
- Maintenance-free: No oil needed.

## Service

- 2-year worldwide guarantee: Yes, Plus 3 years with registration

## Storage

- Case: Hard case



Issue date 2014-01-02

Version: 9.0.1

EAN: 08 71010 36511 78

© 2014 Koninklijke Philips N.V.  
All Rights reserved.

Specifications are subject to change without notice.  
Trademarks are the property of Koninklijke Philips N.V.  
or their respective owners.

[www.philips.com](http://www.philips.com)