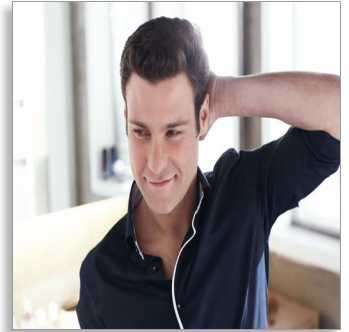




Philips HAIRCLIPPER
Series 5000
hair clipper

Titanium Blades

21 length settings
60 mins' cordless use/1 hr charge



QC5370

Ultimate Control

Style your hair with greater control with this Philips hair clipper. Turn the wheel to select the exact length you want with ease. Get maximum precision with 21 length settings to choose from, ranging from 0.5 mm to 21 mm.

Ultimate Control

- Easy to select and lock in 21 length settings - 0.5 to 21 mm.

Performance

- Superior cutting performance with titanium-coated blades

Easy to use

- Contour-following comb follows every curve of your head.
- Pop-open head makes it easy to clean under the tap
- Shows the battery status
- 2-year guarantee, worldwide voltage, no oil needed
- Up to 60 minutes of cordless power after a 1-hour charge



asimpleswitch.com

PHILIPS

Highlights

Titanium blades



Advanced titanium blades for superior cutting performance and long-lasting sharpness

Built to last



All of our grooming products are built to last. They come with a 2 year worldwide guarantee, worldwide voltage compatibility, and they never need to be oiled.

100% waterproof



Simply pop the head open and rinse under the tap to clean.

Follows every curve



The hair clipper gently follows the contours of your head for a fast, even and comfortable haircut.

Zoom wheel length settings



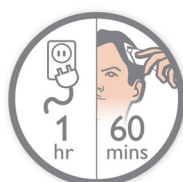
Turn the zoom wheel to select and lock in the length setting you want. The single adjustable comb provides length settings from 3 mm to 21 mm, with precisely 1 mm between each length. Or you can use it without a comb for a close 0.5-mm trim.

Battery light



The light is continuously lit to indicate a full battery, and blinks orange when you have about 10 minutes of usage left.

NiMh batteries



Use with or without the cord for flexibility. The powerful NiMh batteries last for up to 60 minutes after a 1 hour charge. A quick 10 minute charge gives you 10 minutes of clipping time, so it's always ready when you are.

Specifications

Cutting system

- Cutter material: Stainless steel with titanium coating
- Cutter width: 41 mm
- Number of length settings: 21
- Range of length settings: 0.5-21 mm
- Precision (size of steps): by 1 mm
- Maintenance free - No Oil needed

Ease of use

- 100% Washable: Clean under tap
- Display: Charging indicator
- Expert 2D comb

Power system

- Battery type: Ni-MH
- Charging time: 1 hour
- Running time: up to 60 minutes

Design

- Easy grip: Side panels
- Shape: Ergonomic

Accessories

- Cleaning brush

Service

- 2-year worldwide guarantee



Issue date 2013-11-21

Version: 4.0.1

EAN: 08 71010 35973 39

© 2013 Koninklijke Philips N.V.
All Rights reserved.

Specifications are subject to change without notice.
Trademarks are the property of Koninklijke Philips N.V.
or their respective owners.

www.philips.com