

REMINGTON

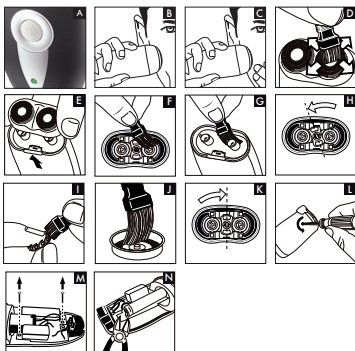
# DUAL TRACK

## ROTARY SHAVER



R91

# REMINGTON



ENGLISH

REMINGTON

Thank you for choosing Remington®. Our products are designed to meet the highest standard of quality, functionality and design. We hope you enjoy using your new Remington® product. Please read the instructions for use carefully and keep them in a safe place for future reference.



### CAUTION

- ◆ Use this appliance only for its intended use as described in this manual.
- ◆ Do not use this product if it is not working correctly, if it has been dropped or damaged, or dropped into water.



### DESCRIPTION

- 1 On/Off button
- 2 Headguard
- 3 Head & Cutter assembly
  - Head frame
  - Cutter carrier
- 4 Shaving unit
- 5 Charging indicator

GB

D

NL

F

E

I

DK

S

FIN

P

SK

CZ

PL

HUN

RU

TR

RO

GR

SL

AE

HE

1

ENGLISH



## GETTING STARTED

For best shaving performance, it is recommended that you use your new shaver daily for up to four weeks to allow time for your beard and skin to become accustomed to the new shaving system.

### ■ CHARGING YOUR SHAVER

Always ensure that your hands, shaver and power cord are dry before charging your shaver.

- ▶ Ensure the shaver is switched off. Connect the shaver to the power cord, then to the mains and charge for at least 24 hours when using for the first time. The charging indicator light will glow steadily while charging. Your shaver cannot be overcharged.
- ▶ Use product until the battery is low. You can use the shaver cordless for up to 30 min.
- ▶ Fully recharge for 24 hours every 6 months to maintain battery condition.
- ▶ When empty, the battery will be charged within 16 hrs.
- ▶ The shaver can be attached to a mains voltage of 220V – 240V.



## HOW TO USE

### SHAVING

- ▶ Switch the shaver on. (DIAGRAM A)
- ▶ Hold the shaving head so all 2 heads touch your face simultaneously. (DIAGRAM B)
- ▶ Stretch the skin with your free hand so the hairs stand upright. (DIAGRAM C)
- ▶ Only apply light pressure on the shaving head while shaving (pressing too hard can damage the heads and make them vulnerable to breakage).
- ▶ Use short, circular strokes.



### Tips for best results:

Ensure your skin is dry. Always hold the shaver at right angles to the skin so that both heads are touching the skin with equal pressure. Use moderate to slow stroking movements. The use of short circular motions in stubborn areas may obtain a closer shave, especially along the neck and chin line.



## CARE FOR YOUR SHAVER

Care for your product to ensure a long lasting performance. We recommend you clean your shaver after each use. Using the brush supplied clean the internal part of the head assembly and shaver body. Always keep the protective cap on the shaving head when the shaver is not in use.

GB

D

NL

F

E

I

DK

S

FIN

P

SK

CZ

PL

HUN

RU

TR

RO

GR

SL

AE

HE

3



## ENGLISH

### **CLEANING DAILY**

- ▶ Ensure the shaver is switched off and unplugged from the mains outlet.
- ▶ Clean the top of the shaver first. Use the brush supplied. (DIAGRAM D)
- ▶ Pull the head and remove the shaving unit from the shaver. (DIAGRAM E)
- ▶ Use the brush to clean the inside of the shaving unit carefully. (DIAGRAM F)
- ▶ Clean the hair pocket carefully with the brush. (DIAGRAM G)
- ▶ Place the shaving unit back onto the shaver.



### **CLEANING WEEKLY**

- ▶ Ensure the shaver is switched off and unplugged from the mains outlet.
- ▶ Pull the head and remove the shaving unit from the shaver. (DIAGRAM E)
- ▶ Turn the switch on the frame to the left and lift the frame out of the shaving unit. (DIAGRAM H)
- ▶ Take the 2 shaving heads (cutters & guards) carefully out of the shaving unit.
- ▶ Clean the cutters and guards with the supplied brush. (DIAGRAM I & J)
- ▶ Place the shaving heads back into the shaving unit.

Note: Please do not mix up the cutters and guards. If you mix them up it may take weeks until the optimal shaver performance is restored.

- ▶ Put the frame back onto the shaving unit and lock it by turning the switch to the right. (DIAGRAM K)
- ▶ Place the shaving unit back onto the shaver. **Note:** If you clean the shaving unit with alcohol or another degreasing agent you need to lubricate the guards with one drop of sewing machine oil after cleaning. It helps to increase the lifespan of the shaving heads.
- ⚠ **Caution:** Product is not washable or water resistant. Do not clean or use under running water.

STOP

**IMPORTANT SAFETY INSTRUCTIONS****WARNING – TO REDUCE THE RISK OF BURNS, ELECTROCUTION, FIRE, OR INJURY TO PERSONS:**

- ▶ An appliance should never be left unattended when plugged in to a power outlet, except when charging.
- ▶ Keep the power plug and cord away from heated surfaces.
- ▶ Make sure the product, power plug and cord do not get wet.
- ▶ This product is not washable or water resistant. Do not clean or use under running water.
- ▶ Do not plug or unplug the shaver with wet hands.
- ▶ Do not use the product with a damaged cord. A replacement can be obtained via our International Service Centres.

GB

D

NL

F

E

I

DK

S

FIN

P

SK

CZ

PL

HUN

RU

TR

RO

GR

SL

AE

HE

5



## ENGLISH

- ▶ Charge, use and store the product at a temperature between 5°C and 35°C.
- ▶ Only use the parts (i.e. power cord) supplied with this appliance. Use of non Remington® parts with this product may give rise to a hazardous condition.
- ▶ This product is for cordless use only. Do not use your shaver when it is plugged into the mains.
- ▶ Keep this product out of reach of children. The use of this appliance by persons with reduced physical, sensory or mental capabilities or lack of experience and knowledge can give cause to hazards. Persons responsible for their safety should give explicit instructions or supervise the use of the appliance.



### PROTECT THE ENVIRONMENT

This appliance contains an environmental friendly rechargeable Nickel Metal Hydride battery. Do not dispose the appliance or the battery in household waste, restrictions exist in most countries. Adhere to the national or local regulations for collection and disposal that apply for your specific location. In case you are required to remove the battery from the appliance for separate disposal see instructions in the 'Battery Removal' section on how to open the housing.



For further information on recycling see [www.remington-europe.com](http://www.remington-europe.com)



**CAUTION:** Do not put in fire or mutilate your battery packs as they may burst or release toxic materials.

**BATTERY REMOVAL**

- ⚠ DANGER:** Once the shaver has been dismantled for disposal, do not attempt to reassemble and/or use.
- ▶ Unplug the shaver.
  - ▶ Run the shaver until the motor stops.
  - ▶ Pull the head release button and remove the shaving unit from the shaver. (DIAGRAM E)
  - ▶ Using a small cross head screwdriver remove the screws on the hairpocket. (DIAGRAM L)
  - ▶ Pull or gently pry apart the shaver halves to expose the battery.
  - ▶ Remove the front panel (Diagram M)
  - ▶ Remove the 2 screws on the front panel (Diagram N)
  - ▶ Cut the connection plate on both ends of the battery. (DIAGRAM O).
  - ▶ Dispose of battery with care.

GB

D

NL

F

E

I

DK

S

FIN

P

SK

CZ

PL

HUN

RU

TR

RO

GR

SL

AE

HE

7

ENGLISH

**2**  
years

## SERVICE & WARRANTY

This product has been checked and is free of defects. We warrant this product against any defects that are due to faulty material or workmanship for a 2 year period from the original date of consumer purchase. If the product should become defective within the warranty period, we will repair any such defect or elect to replace the product or any part of it without charge provided there is proof of purchase. This does not mean an extension of the warranty period.

In the case of a warranty simply call the Remington® Service Center in your region.

This warranty is offered over and above your normal statutory rights.

The warranty shall apply in all countries in which our product was sold via an authorised dealer.

This warranty does not include shaving heads / foils and cutters which are consumable parts. Also not covered is damage to the product by accident or misuse, abuse, alteration to the product or use inconsistent with the technical and/or safety instructions required. This warranty shall not apply if the product has been dismantled or repaired by a person not authorised by us.