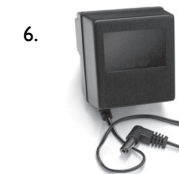


REMINGTON

# REMINGTON® PRO POWER HAIR CLIPPER



REMINGTON



Model No. HC5350/5550/5750

10/UK/HCS350/5550/5750 Version 05/10 Part No. T22-29493  
REMINGTON® is a Registered Trade Mark of Spectrum Brands, Inc.,  
or one of its subsidiaries VARTA Consumer Batteries GmbH & Co. KGaA

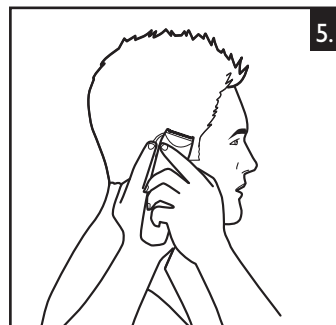
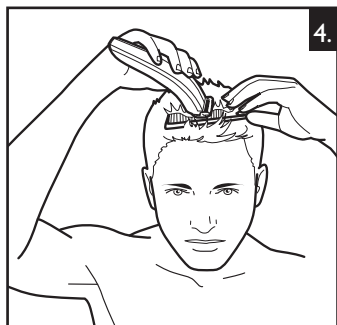
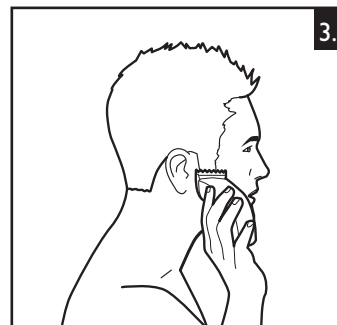
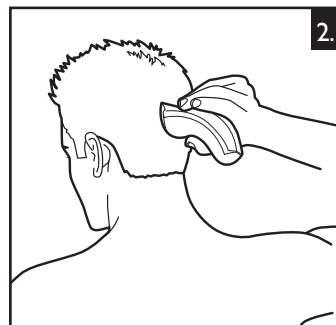
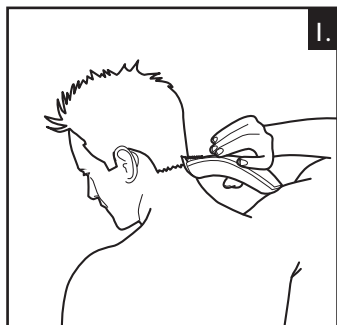
Alfred-Krupp-Str.9  
73479 Ellwangen  
Germany  
[www.remington-europe.com](http://www.remington-europe.com)

© 2010 SBI



HC5350/5550/5750

All technical modifications reserved. 09/08 TSC 08 05/34

**United Kingdom**

 **+44 0800 212 438 (free call)**

Rayovac Europe Ltd,  
Watermans House, Kingsbury Crescent,  
The Causeway, Staines, Middlesex,  
TW18 3BA, UNITED KINGDOM

[www.remington.co.uk](http://www.remington.co.uk)

# ENGLISH

**Thank you for choosing Remington®. Our products are designed to meet the highest standard of quality, functionality and design. We hope you enjoy using your new Remington® product.**

**Please read the instructions for use carefully and keep in a safe place for future reference.**



## CAUTION

- ◆ Use this appliance only for its intended use as described in this manual. Do not use attachments not recommended by Remington®.
- ◆ Do not use this product if it is not working correctly, if it has been dropped or damaged, or dropped into water.



## DESCRIPTION

1. On/Off switch
2. Blade set
3. 2 attachment guide combs
4. Stubble comb (Only for HC5550 & HC5750)
5. Digital Display (Only for HC5750)
6. Charging adaptor
7. Charging stand (Only for HC5750)
8. Micro USB port
9. Micro USB cable
10. Hair thinner mechanism
11. Quick Wash release button



## GETTING STARTED

### ■ CHARGING YOUR HAIRCLIPPER

Before using your hair clipper for the first time, charge for 14-16 hours. Charging display light will stay on after the battery is fully charged (HC5350 & HC5550). The digital display will stay on and plug icon will stop flashing after the battery is fully charged (only for HC5750).

# ENGLISH

Your clipper cannot be overcharged. However, if the product is not going to be used for an extended period time (2-3 months), unplug it from the mains and store. Fully recharge your hairclipper when you would like to use it again.

To preserve the life of your batteries, let them run out every six months then recharge for 14-16 hours.

## ■ CHARGING VIA STANDARD ELECTRICAL SOCKET

- ▶ Ensure the product is switched off.
- ▶ Connect the charging adaptor to the product and then to the mains.  
When charging the LED indicator (HC5350 & HC5550) will illuminate and the digital display and plug icon (HC5750) will be displayed on the product during charging.
- ▶ Allow 14-16 hours for a complete charge.

## ■ USB CHARGING VIA PC

- ▶ Ensure the product is switched off.
- ▶ Connect your USB cable to the USB port on the PC.
- ▶ Connect the USB cable to your hair clipper.
- ▶ Charging LED indicator (HC5350 & HC5550) will illuminate or the digital display and plug icon (HC5750) will be displayed on the product during charging.
- ▶ Allow 14-16 hours for a complete charge.

## ■ CHARGING VIA CHARGING STAND (Only for HC5750)

- ▶ Ensure the product is switched off.
- ▶ Connect the charging adaptor to the charging stand and then to the mains.
- ▶ The digital display and plug icon will be displayed on the product during charging.
- ▶ Allow 14-16 hours for a complete charge.

## ■ CORDED USE

- ▶ Connect the charging adaptor to the product and then to the mains.
- ▶ When the cord is connected to the mains, a charging LED light (HC5350 & HC5550) or plug icon (HC5750) is displayed on the hairclipper.
- ▶ The charging LED light (HC5350 & HC5550) and plug icon (HC5750) will turn off when the unit is switched on.
- ⚠ CAUTION: Extended mains only use will result in the reduction of the battery life.
- ⚠ WARNING: The hair clipper can not be operated in corded mode while connected to a PC via the USB port.

## ■ CORDLESS USE

- ▶ When the unit is switched on and fully charged, the product can be used in cordless mode for up to 40 minutes.
- ▶ The digital indicator (HC5750) will display the maximum usage time, which will decrease during usage.
- ▶ If the digital indicator display between 0 – 5 minutes, the display will flash to indicate that the unit need to be recharged.

# ENGLISH



## HOW TO USE

### Before starting the cut

- ▶ Inspect the clipper making sure that it is free from hair and dirt.
- ▶ Seat the person so that their head is approximately at your eye level.
- ▶ Before cutting, always comb the hair so it is tangle free and dry.

Comb position	Short comb	Long comb
1	3 mm	24 mm
2	6 mm	27 mm
3	9 mm	30 mm
4	12 mm	33 mm
5	15 mm	36 mm
6	18 mm	39 mm
7	21 mm	42 mm

1mm length is achieved without any combs.

### To attach a comb

- ▶ Hold the comb with its teeth upward
- ▶ Slide it onto and along the track of left and right side of the housing unit, the front of the combs firmly sits against the clipper blade.

### To remove the comb

- ▶ Holding the clipper with the blades facing away from you, firmly push the comb upward and away from the blades.
- ▶ Each comb attachment is marked accordingly on its outside middle surface. (3-21 mm & 24-42 mm)

### INSTRUCTIONS FOR HAIR CUTTING

- ◆ Note: For even cutting, allow the comb attachment/blade to cut its way through the hair. Do not force it through quickly. If you are cutting for the first time, start with the maximum comb attachment.

#### STEP 1 – Nape of the neck – PICTURE 1

- ▶ Set the comb attachment to 3mm or 6mm.
- ▶ Hold the clipper with the blade teeth pointing upwards. Begin starting at the centre of the head at the base of the neck.
- ▶ Slowly lift the clipper, working upwards and outwards through the hair, trimming just a little at a time.

#### STEP 2 – Back of the head – PICTURE 2

- ▶ With the comb attachment set on 12mm or 18mm, cut the hair at the back of the head.

#### STEP 3 – Side of the head – PICTURE 3

- ▶ Set the comb attachment to 3mm or 6mm guide to trim sideburns. Then change the setting to 9mm and continue to cut to the top of the head.

# ENGLISH

## STEP 4 – Top of the head – PICTURE 4

- ▶ Use the longer length comb attachment and set it to 24mm or 27mm then cut hair on top of the head against the direction in which the hair normally grows.
- ▶ For longer hair on top, use the longer length comb attachment (24-42mm) to achieve desired style.
- ▶ Always work from the back of the head.

## STEP 5 – The finishing touches – PICTURE 5

- ▶ Use the clipper without an attachment comb for close trimming around the base and sides of the neck. Use the ear comb guides to get a clean line around each ear. For the required ear comb guide, angle the clipper and lightly stroke around each ear to the back of the neck.
- ▶ To produce a clean straight line at the sideburns, reverse the hair clipper. Place the reversed clipper at right angles to the head, tips of the blades lightly touching the skin and then work downwards.

### ■ SHORT TAPERED STYLES – “FLAT TOPS” & SHORT CUTS

- ▶ Starting with the longest comb attached (24mm-42mm), cut from the back of the neck to the crown. Hold the guide comb flat against the head and slowly move the clipper through the hair, as shown. (PICTURE 1)
- ▶ Use the same procedure from the lower side to the upper side of the head, as illustrated. Then cut the hair against the direction in which it grows and level with the sides. (PICTURE 3)
- ▶ To give a “flat top” look, the hair on top of the head must be cut over the top of a flat comb.
- ▶ Use a closer guide comb to taper the hair down to the neckline as desired.

### ■ INSTRUCTIONS FOR THE STUBBLE GUIDE COMB (Only for HC5550 & HC5750)

The 1.5mm guide comb is designed to create the perfect 3-day beard look.

- ▶ Place the flat top of the trimmer comb against the skin.
- ▶ Slowly slide the trimmer through the beard. Repeat from different direction as necessary.
- ▶ If hair builds up in the trimmer comb during the trimming process, switch the unit off, pull off the comb and brush/rinse off.

### ■ HAIR THINNER MECHANISM

Simply adjust the hair thinner mechanism by sliding the button at the top of the hair clipper.

- ▶ Blending different length areas. Select the proper length guard to blend. Slide out the Texture/Thin out feature.
- ▶ Textured cut – Slide out the texture/thin out feature with the guard in place to give an all over textured cut.

### ■ AUTO BOOST SYSTEM (Only for HC5750)

There are 3 settings for the Auto Boost system: Off, Auto and Boost.

- ▶ If the clipper is set to Auto it will run at regular power under low load conditions.
- ▶ When more power is needed, the clipper will automatically sense and provide maximum Boost.
- ▶ If the clipper is set to Boost, it will run at maximum power at all times.

### ■ DUAL BOOST SYSTEM (Only for HC5550)

There are 3 settings for the Dual Boost system: Off, On, Boost.

- ▶ If the clipper is set to On, it will run at regular power.
- ▶ If the clipper is set to Boost, it will provide maximum power.

# ENGLISH



## CARE FOR YOUR HAIRCLIPPER

Your clipper is fitted with high quality blades

To ensure long lasting performance of your clipper, clean the blades and unit regularly. Always keep the attachment guide comb on the trimmer blade.

### ■ AFTER EACH USE

- ▶ Ensure the clipper is switched off and disconnected from the mains.
- ▶ Brush the accumulated hair from the blades. Do not submerge the clipper in water.
- ▶ To clean the unit, wipe with a damp cloth and dry immediately.

◆ Note: Ensure that the clipper is turned off when cleaning.

### ■ WASHABLE CLEANING

The QUICK WASH SYSTEM is designed to maximise the efficiency of washable cleaning.

- ▶ Click the buttons that are located on the sides of the hair clipper head.  
The blades will slide out and the blade set can easily be cleaned under the tap.
- ▶ Once the blades are cleaned the blades are locked into place by pushing the blade set towards the hair clipper head and will snap into place.
- ▶ Do not run the entire unit under the tap, only the blade set is meant to be submerged in water.

◆ Note: Ensure that the hair clipper is turned off when cleaning.

### ■ EVERY SIX MONTHS

At regular intervals the Blade Set should be removed and cleaned.

- ▶ Remove the 2 screws retaining the fixed blade with a screwdriver. Do not remove blade set.
- ▶ Brush out hairs from between the blades with soft cleaning brush. Do not remove the lubricating grease from the blades. It is not necessary to remove the small moving blade from the unit.
- ▶ If the moving blade has been removed this can be re-fitted by slotting the coated blade holder over the pin in the centre of the interior product head. The groove on the coated blade, just below the teeth, rests on a metal plate at the opposite side to the screw holes. The fixed blade is fitted with the raised profile pointing outwards and fixed with the 2 screws.
- ▶ Note that if the blades are not correctly aligned then cutting efficiency will be impaired.
- ▶ Place a few drops of cutter or sewing machine oil onto the blades. Wipe off excess oil.

### ◆ CAUTION:

- Do not use liquid cleaners on the blades or harsh or corrosive chemicals on the blade casing. Always use a soft brush to remove the accumulated hairs.
- ▶ Unplug the charge adaptor from the power outlet when fitting or removing attachments, or while cleaning the product.
- ▶ Always store this appliance and cord in a moisture-free area.
- ▶ Do not wrap the cord of the charging adaptor around the appliance.

# ENGLISH



## IMPORTANT SAFETY INSTRUCTIONS

### WARNING – TO REDUCE THE RISK OF BURNS, ELECTROCUTION, FIRE, OR INJURY TO PERSONS:

- ▶ An appliance should never be left unattended when plugged into a power outlet.
- ▶ Keep the power plug and cord away from heated surfaces.
- ▶ Make sure the power plug and cord do not get wet.
- ▶ Do not plug or unplug the product with wet hands.
- ▶ Do not use the product with a damaged cord. A replacement can be obtained via the nearest Remington® Service Centre.
- ▶ Charge, use and store the product at a temperature between 15°C and 35°C.
- ▶ Always unplug from the mains when cleaning.
- ▶ Only use the parts supplied with the appliance.
- ▶ Keep this product out of reach of children. The use of this appliance by persons with reduced physical, sensory or mental capabilities or lack of experience and knowledge can give cause to hazards. Persons responsible for their safety should give explicit instructions or supervise the use of the appliance.



Suitable for cleaning under water.



## PROTECT THE ENVIRONMENT



Ni-MH

- ▶ The product contains a Nickel Metal Hydride cell unit. Do not dispose the trimmer in household waste at the end of its useful life. Disposal can take place at our service centres or appropriate collection sites.

### ⚠ CAUTION:

Do not put in fire or mutilate your battery packs as they may burst or release toxic materials.



For further information on recycling see [www.remington-europe.com](http://www.remington-europe.com)



# ENGLISH



## BATTERY REMOVAL

- ▶ The battery must be removed from the appliance before it is scrapped.
- ▶ The appliance must be disconnected from the supply mains when removing the battery.
- ▶ Ensure the clipper is discharged of all power and disconnected from the mains.
- ▶ Lift or pry the USB port cover plate on the bottom of the clipper.
- ▶ Lift or pry the deco plate on the lower portion of the clipper and unscrew 1 screw located on the back housing of the clipper.
- ▶ Lift or pry the clipper halves apart, exposing the battery chamber.
- ▶ Lift or pry the USB connector and lift or pry the cover plate on the bottom of the battery chamber.
- ▶ Take out the battery and printed circuit board assembly from the battery chamber.
- ▶ Cut the tabs on both ends of the battery and remove it from the printed circuit board
- ▶ The battery is to be disposed of safely.



## SERVICE & WARRANTY

This product has been checked and is free of defects. We warrant this product against any defects that are due to faulty material or workmanship for a 3 year period from the original date of consumer purchase. If the product should become defective within the warranty period, we will repair any such defect or elect to replace the product or any part of it without charge provided there is proof of purchase. This does not mean an extension of the warranty period.

In the case of a warranty simply call the Remington® Service Center in your region.

This warranty is offered over and above your normal statutory rights.

The warranty shall apply in all countries in which our product was sold via an authorised dealer.

This warranty does not include cutters which are consumable parts. Also not covered is damage to the product by accident or misuse, abuse, alteration to the product or use inconsistent with the technical and/or safety instructions required. This warranty shall not apply if the product has been dismantled or repaired by a person not authorised by us.