



Philips
Hair clipper

QC5015

Trim with ease

Hair and beard

This new hairclipper from Philips allows you to create any style you want in up to 8 length settings from 0-21mm. With the additional beard trimming comb you can also trim your beard with ease.

Best performance that feels great

- Self-sharpening stainless steel blades for precise results

Create the look you want

- 8 integrated length settings up to 21 mm
- Beard trimming comb with 7 length settings

PHILIPS
sense **and** simplicity

Specifications

Power system

- Usage: Corded/cordless
- Charging time: 8 hours
- Running time: 35 minutes

Maintenance

- Lubrication: Blades need no oiling
- Guarantee: 2-year worldwide guarantee

Accessories

- Barber tools: Styling comb and scissors

Highlights

Self-sharpening stainless steel blades

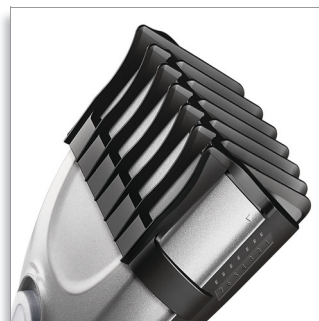


Self-sharpening stainless steel blades ensure a precise and even result every time.

8 integrated length settings

Select and locks your desired length within a versatile range of possible lengths.

Additional beard trimming comb



The additional beard trimming comb allows you to trim your beard with ease. It has 7 lock-in length settings for your convenience.



Issue date 2013-01-10

Version: 1.0.1

12 NC: 0000 000 00000

© 2013 Koninklijke Philips Electronics N.V.
All Rights reserved.

Specifications are subject to change without notice.
Trademarks are the property of Koninklijke Philips
Electronics N.V. or their respective owners.

www.philips.com